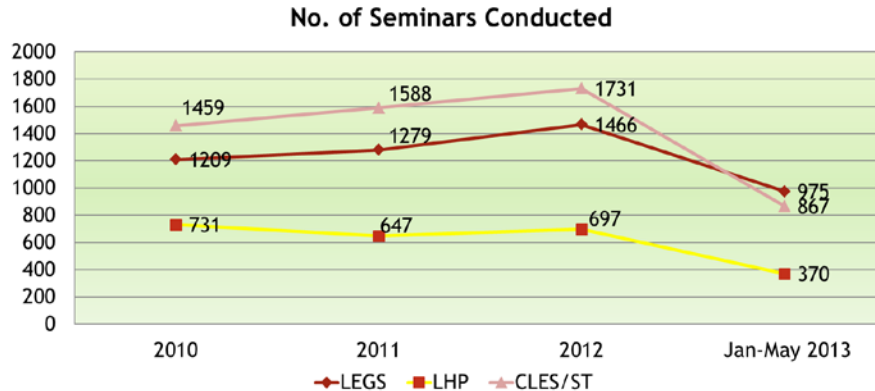
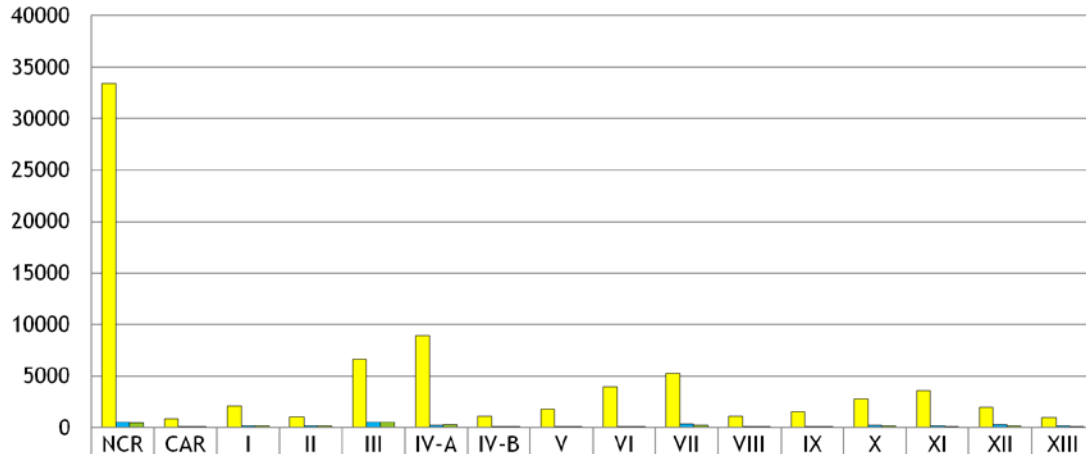


Labor-Management Education 2010-1st Semester 2013

- Conduct of CLES/ST outnumbered the holding of LHP Seminars. This can mean that the regional / field offices have almost covered the establishments in their respective areas of jurisdiction.
- There are more LEGS seminars held than there are LHPs conducted. It can mean that more focus is given towards the education of students to help them in the transition from school to wage employment.

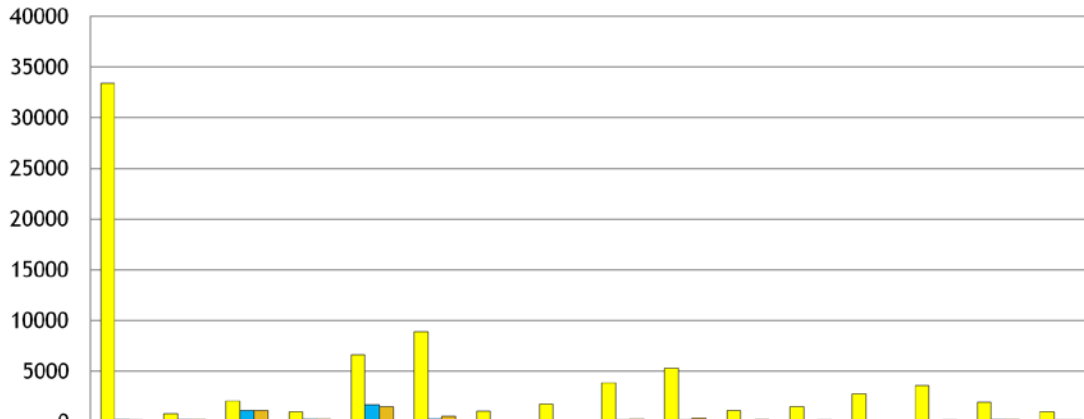


LHP Regional Accomplishments 2010 - 1st Semester 2013



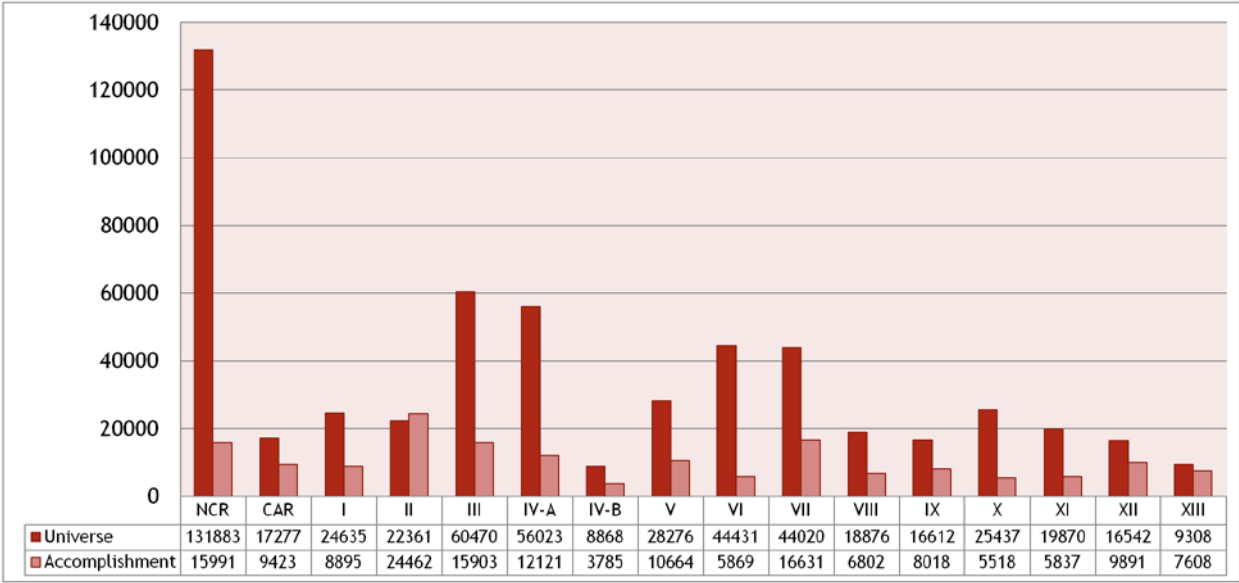
Universe	33410	852	2038	1018	6649	8880	1073	1738	3906	5273	1120	1521	2788	3579	1921	999
Target	480	38	130	120	520	199	63	56	56	318	60	105	210	163	250	121
Accomplishment	452	66	131	118	492	287	36	50	56	207	76	48	146	97	116	67

CLEs Regional Accomplishments 2010 – 1st Semester 2013

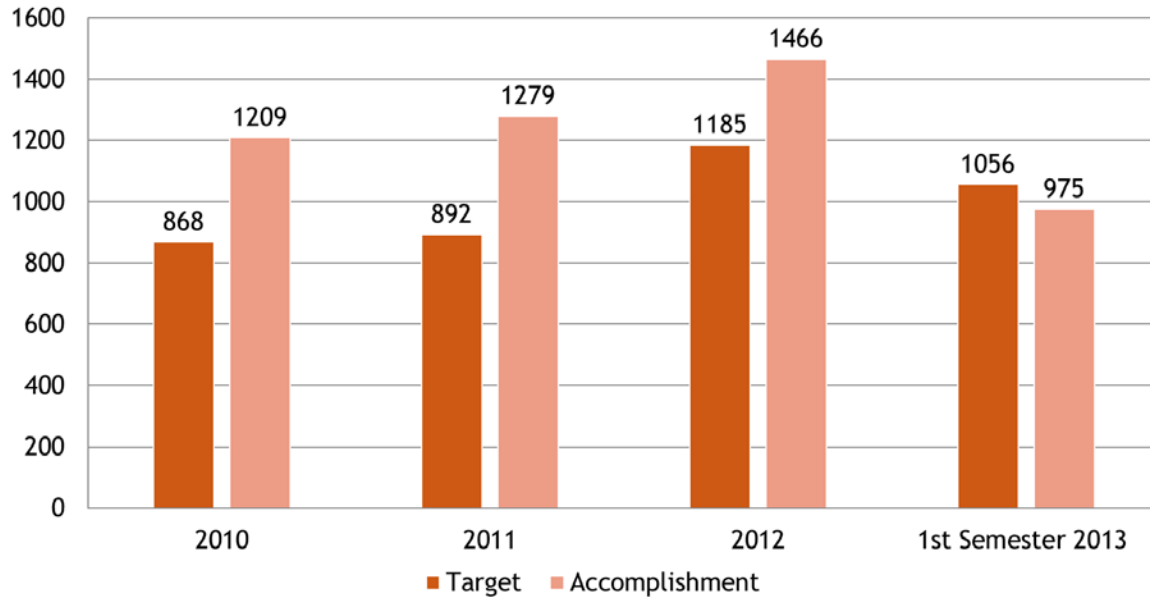


Universe	33410	852	2038	1018	6649	8880	1073	1738	3906	5273	1120	1521	2788	3579	1921	999
Target	200	214	1150	275	1686	347	75	32	192	155	87	110	66	83	238	138
Accomplishment	144	223	1130	267	1481	593	68	36	260	402	225	157	65	180	216	182

LEGS Regional Accomplishments 1st Semester 2013



LEGS Seminars (By Year)
2010-1st Semester 2013



LEARNING MATERIALS AND MODULE DEVELOPMENT

- ▶ Monitored the posting of Q&As in DOLE websites and the submission of modules for the Labor and Employment Education Services (LEES) in the employment (local and overseas), labor standards and social protection and labor relations
- ▶ Standardized BLR modules based on required formats, including the LR Module Overview “Workplace Relations: Concepts and Application” for the LLCO training
- ▶ The BLR serves as the over-all secretariat for the LEES, although the training component for Department remains with the HRDS.
- ▶ For the 1st 5 months 2013, the BLR monitored the posting of Q&As in the DOLE websites, and most have their Q&As already uploaded. These include the Q&A on DO 18-A, the PNP Guidelines and Simplified LR at the BLR website; the Batas Kasambahay at the BWC and BWSC websites; the VA, Con-Med, LMC of the NCMB and CA of the NLRC.
- ▶ The BLR also monitored the submission of modules for the Labor and Employment Education Services (LEES) in the employment (local and overseas), labor standards and social protection and labor relations. A detailed list of the modules per cluster will be in the succeeding slides.

Employment Cluster Modules (Local)

Local Employment and Manpower Development Cluster Secretariat: Bureau of Local Employment	BLE	<ul style="list-style-type: none"> • Basic Employment Services Training (BEST) Workshop • PESO Institutionalization • DOLE Programs Implemented by PESO • Enhanced Phil-Jobnet Online System • Understanding Revised Guidelines (D.O. 113 series of 2011) • Career Guidance and Employment • Labor Market Information • Project Jobsfit the DOLE 2020 Vision
	TESDA	<ul style="list-style-type: none"> • TESDA Services • Training & Development Opportunities • Requirements of National Certificate
	PRC	<ul style="list-style-type: none"> • Requirements for Professional Licensure Examination
	NMP	<ul style="list-style-type: none"> • Enhancing Employability Skills

A total of 37 modules: 23 were submitted but with different status of submission:

- Module
- Powerpoint, PDF, Video, etc.
- Session Guide
- Notes/Reference

Employment Cluster Modules (Overseas)

Overseas Employment Concerns Cluster Secretariat: International Labor Affairs Bureau	ILAB	<ul style="list-style-type: none">• ILAB and POLOs Programs and Services
	POEA	<ul style="list-style-type: none">• POEA Programs and Services
	OWWA	<ul style="list-style-type: none">• OWWA Programs and Services
	NRCO	<ul style="list-style-type: none">• NRCO Programs and Services

Labor Standards & Social Protection Cluster Modules

<p style="text-align: center;">Labor Standards and Social Protection Cluster Secretariat: Bureau of Working Conditions</p>	BWC	<ul style="list-style-type: none"> • General Labor Standards
	BWSC	<ul style="list-style-type: none"> • Social Protection of Workers in the Formal Economy • Training Modules for Rural Workers Education • Rehabilitation for Occupationally Disabled Workers • Family Welfare Program (additional) • Other Employment Related Laws (additional)
	NWPC	<ul style="list-style-type: none"> • National Productivity and Measurement
	OSHC	<ul style="list-style-type: none"> • Basic Occupational Safety and Health
	ECC	<ul style="list-style-type: none"> • Introduction to the ECC and the ECP

Labor Relations Cluster Modules

Labor Relations Cluster Secretariat: BLR	BLR	<ul style="list-style-type: none">• Overview of Philippine Industrial Relations System and Overview of Labor Relations Concept• Union Finance Administration• Labor Relations for Foreign Employers• LHP - Labor Relations, Human Relations, Productivity• Right to Self-Organization• Training Guide for FOA Trainers in the Philippines
	NCMB	<ul style="list-style-type: none">• Collective Bargaining Administration of Agreements• Labor Management Cooperation Schemes• Dispute Settlement
	NLRC	<ul style="list-style-type: none">• Employee Discipline• Security of Tenure

Catch-Up Plan

- Printing and distribution of IEC Materials (2nd batch of PNP Guidelines Handbook, Workers' Statutory Benefits in Korean Language, AFP Guidelines Handbook, DO 18-A)
- Provide technical assistance in the succeeding training for LLCOs